

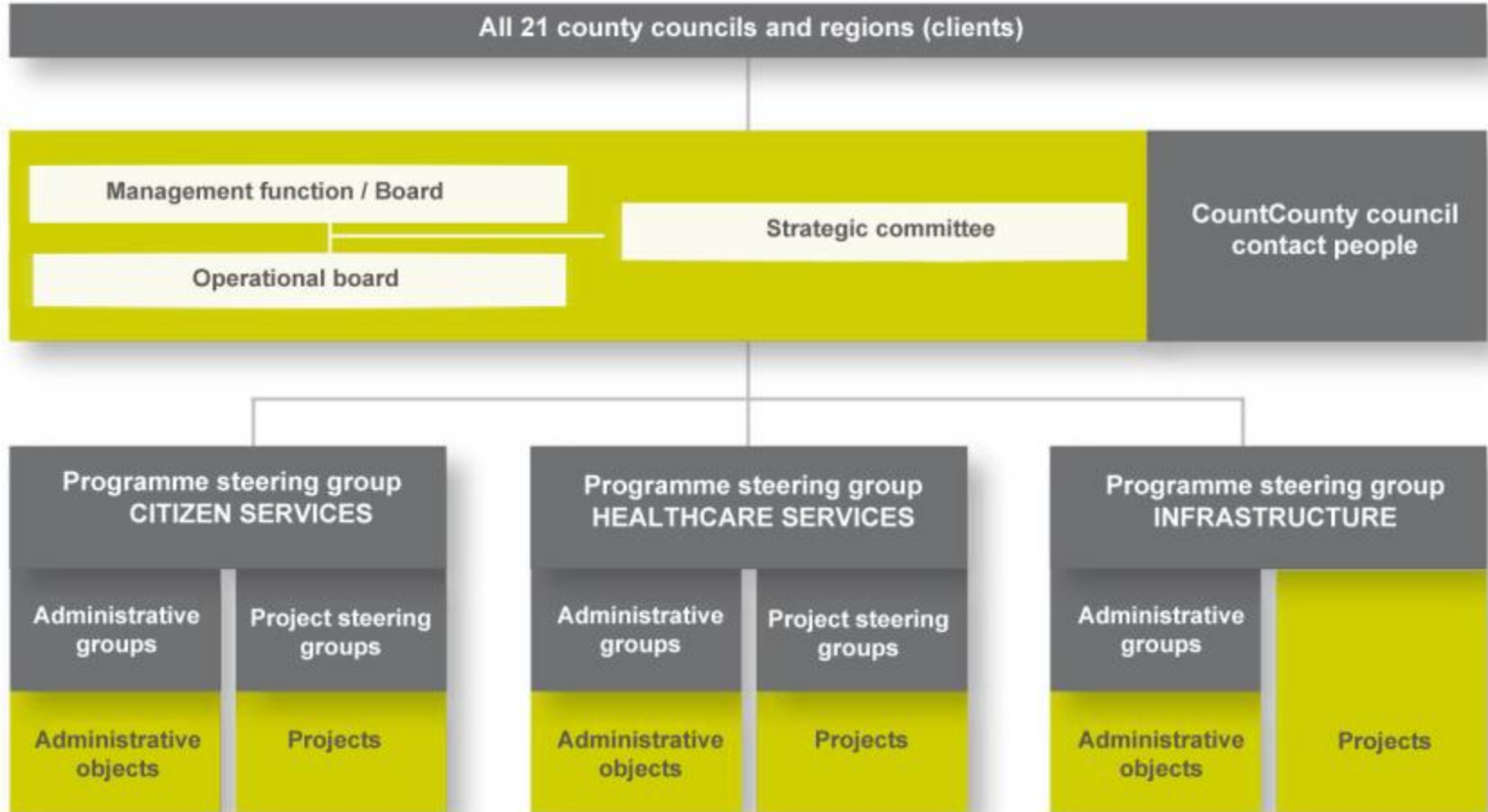
Co-operation between stakeholders in Sweden

Lars Jerlvall



Development of eHealth in society





Finance model county councils (CeHiS)

- ❑ The county councils finance CeHiS for joint development projects and administrative objects (EUR 45 million)
- ❑ Implementations are paid by each county council, but form part of joint implementation projects
- ❑ A positive approach to funds from the government, with an understanding that these funds are being provided to simulate the work



Cooperation between county councils and municipalities in Sweden

- On a national level – Swedish Association of Local Authorities and Regions (SALAR). Today the main part financed from the government.
- The county councils (CeHiS) and the municipalities – new projects (i.e. infrastructure, Patient Summary financed 50/50)
- Cooperation on regional level between a county council and the municipalities in county. Local financing